

680kg Vehicle Positioning Hydraulic Wheel Skate

IMPORTANT! PLEASE READ THESE INSTRUCTIONS CAREFULLY. NOTE ALL SAFETY INSTRUCTIONS AND WARNINGS. USE THE PRODUCT CORRECTLY AND WITH CARE FOR THE PURPOSE FOR WHICH IT IS INTENDED. FAILURE TO FOLLOW THESE INSTRUCTIONS MAY CAUSE DAMAGE TO PROPERTY AND/OR PERSONAL INJURY.

PLEASE KEEP THESE INSTRUCTIONS SAFE AND AVAILABLE FOR FUTURE REFERENCE.

CERTIFICATE OF GUARANTEE

This product is guaranteed for a period of 2 Years, with effect from the date of purchase and applies only to the original purchaser. This guarantee only applies to defects arising from, defective materials and or faulty workmanship that become evident during the guarantee period only and does not include consumable items. The manufacturer will repair or replace the product at their discretion subject to the following. That the product has been used in accordance with the guidelines as detailed in the product manual and that it has not been subjected to misuse, abuse or used for a purpose for which it was not intended. That it has not been taken apart or tampered with in any way whatsoever or has been serviced by unauthorised persons or has been used for hire purposes. Transit damage is excluded from this guarantee. Claims made under this guarantee must be made in the first instance, directly to the retailer within the guarantee period. Only under exceptional circumstances should the product be returned to the manufacturer. In this case it may be the consumer's responsibility to return the product at their cost ensuring that the product is adequately packed to prevent transit damage and must be accompanied with a brief description of the fault and a copy of the receipt or other proof of purchase. The manufacturer shall not be liable for any special, exemplary, direct, indirect, incidental, or consequential loss or damage under this guarantee.

INTRODUCTION

Thank you for purchasing this product which has passed through our extensive quality assurance process. Every care has been taken to ensure that it reaches you in perfect condition. However, in the unlikely event that you should experience a problem, or if we can offer any assistance or advice please do not hesitate to contact our customer care department. For details of your nearest customer care department please refer to the telephone numbers at the back of this manual.

Safety First

Before attempting to operate this product the following basic safety precautions should always be taken to reduce the risk of fire, electric shock and personal injury. It is important to read the instruction manual to understand the application, limitations and potential hazards associated with this product.

HELPLINE & SPARE PARTS

In the unlikely event of a defect occurring please contact our Helpline.

Office hours: Monday - Friday 9:00am - 5:00pm. Telephone Number 01332 576 850

TECHNICAL SPECIFICATIONS

Item	WSHD1500
Lifting Capacity:	680 kg
Min. Opening:	625mm
Wheel Width	381mm

SAFETY MARKINGS

The operator shall be provided with all necessary information about training and about pumping and translating forces.

Do not operate this skate on inclined ground. The wheel skate must be used only on level, solid ground. Unanticipated motion will occur as soon as the wheel skate lifts the tyre from the ground.

Regular check for damage. Stop using the product, if any damage is found. The wheel skate must be used in pairs at either the front or rear of the vehicle.

Do not over load the wheel skate beyond the load rating of 680kgs. Prohibition of lifting of persons.

Do not start the vehicle's engine or drive with the wheel skate in use. Wheel skates are designed for hand manoeuvring of vehicles only.

Do not use the wheel skate to lift tyres wider than 381 mm.

Ensure the wheel skates are free to move and that there are no obstructions in the area of use. It is necessary that the operator can watch the lifting device and the load during all movements. In the event of blockage or breakdown of the product, the car must be lifted by jack, and remove the wheel skate, then lower the car on the ground. If you are unsure, please ask for professional help.

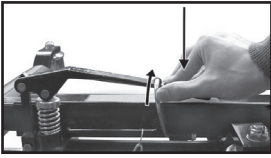
Ensure there are no obstructions beneath the vehicle when it is to be lowered.

Do not attempt to push the wheel skate over obstacles. They are designed to be used on a level and smooth surface only.

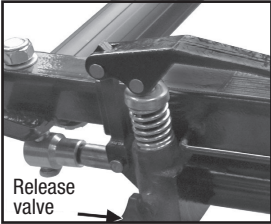
WARNING!

Do not get under a vehicle supported only by a vehicle position jack, use support stands.
Check regularly for spillage of oil. Remove the spilled oil.

OPERATION



Place the skate on the floor and press down on the pedal to release the pedal lock. Pull out the lock pin from the frame.

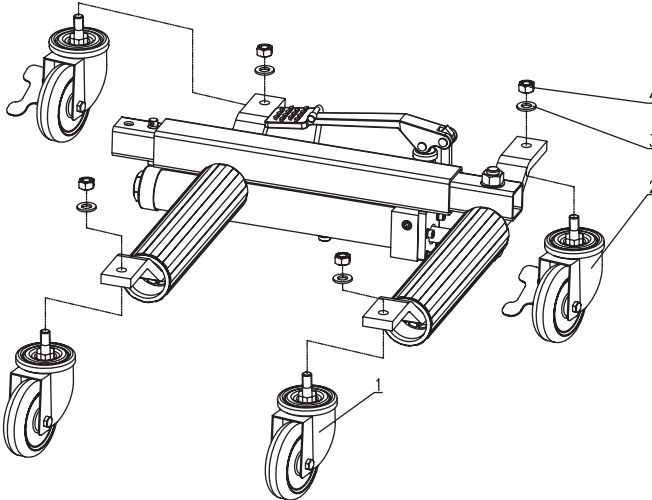


Before operating open the release valve by turning the hand wheel counter clockwise. Expand the skate enough to place around the tyre and position it so both rollers contact the tyre tread. To obtain the best control of the skate while expanding around the tyre place your left hand on top of the left side axle and your right hand in the centre of the pedal. Close the release valve by turning the hand wheel clockwise.

To lift the tyre, place foot on to the pedal pressing with smooth, even strokes, keep pumping until the tyre is lifted from the ground 1 inch or less. After lifting, the lower the tyre is to the ground, the more stable the wheel skate will be. After lifting be sure to lock the pin in place before moving. Repeat the process on the other tyres and manoeuvre the vehicle as required.

To release the wheel skate pull the pin out from the frame and open the release valve by turning slowly counter clockwise. The wheel skate may be removed only when the rollers disengage from the tyre.

EXPLODED PARTS DIAGRAM



No.	Description	Qty
1	Caster	2
2	Caster with brake	2
3	Washer	4
4	Nut	4